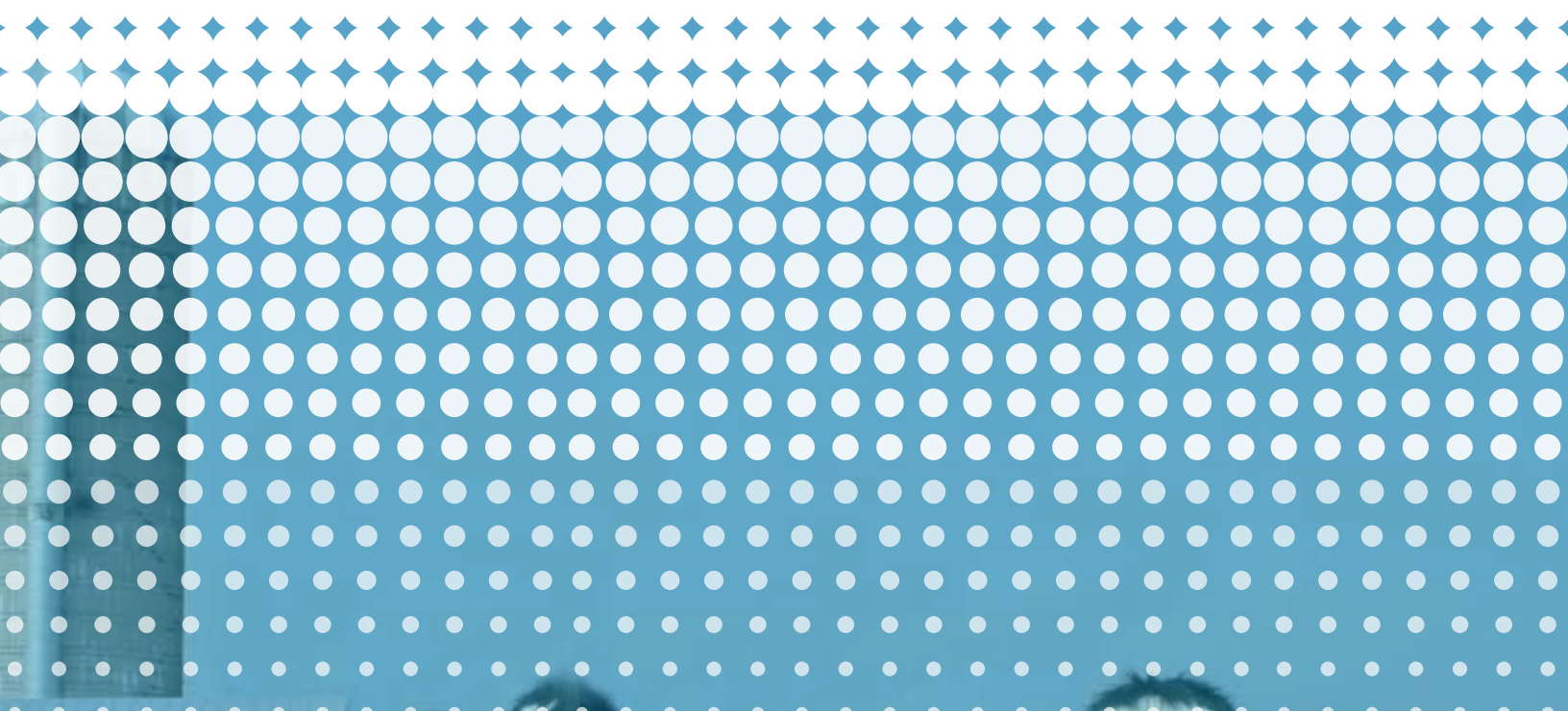




# Taurus



LIVESTOCK  
WEIGHING

## livestock weighing data management

### THE PRODUCT

The Taurus weighing system is comprised of reliable, long lasting materials that are manufactured to function in rugged and harsh environments. The Taurus system can be used to weigh cattle, pigs, sheep, horses, goats, buffalos and other livestock. The weigh bars are suited for easy installation under a squeeze chute or platform, and its IP68 protection grade (water full immersion protection) allows for the best product on the market against dirt and moisture.

Our weighing indicator and **BLOCKER filter** guarantees a perfect and stable reading of weight and is specifically designed for restless animals. The **DYNAMIC** Taurus system is designed to weigh the animals while they are walking and passing through gates.



### TAURUS TRACE SW

The Taurus TRACE SW can be integrated with the dinamica generale® DTM2009DDP™ for complete control of feeding processes and animal weight in an all-in-one unique and powerful tool.

### KNOWING THE WEIGHT OF YOUR ANIMALS MEANS:

- Increased profitability
- Improved reproductive performance
- Improved first lactation production
- Understanding the true breeding value of the cow
- Understanding your herd health
- Helping to prevent diseases while reducing veterinary costs
- Selecting animals by weight for sale and/or slaughter
- Lowering environmental impact

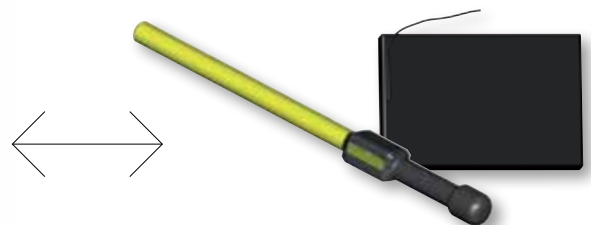
**By using the Taurus system, you can manage the weight of your animals while helping to prevent diseases and monitor body condition.**

Wireless communication



Weigh bars

Serial Port 1/ Serial Port 2



ID Reader - Barcode Reader

# THE PRODUCT

Only records weight with no data management features.

## Advanced System

Includes weight reading and complete data management features.

## Dynamic System

Ideal for restless animals; less stress for them and less time to weigh the entire herd.

## OPTIONAL

### HOT GALVANIZED STEEL PLATFORM

**Dimensions:** 2520 x 900 mm (100 x 35.5 inches)  
Coated black; animals tend to be afraid of steel or aluminum color.



*Available for Basic and Advanced System*

### LATERAL RAILING AND GATES

Standard rail to create walking passages and control the flow of the animals during the weighing operation.



*Available for Basic, Advanced and Dynamic System*

### EID READER

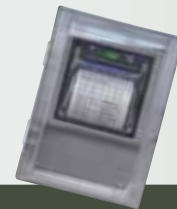
Electronic reader detects the ID of each animal.  
All animal data will be matched with its specific ID.  
Portable, wall mount or mobile versions are available.



*Available for Advanced and Dynamic System*

### PRINTER

Thermal printer with IP67 protection grade prints weighing information.



*Available for Advanced and Dynamic System*

### AUTOMATIC CONTROL

Control the opening and closing of doors directly from the indicator to manage the flow of the animals.



*Available for Advanced and Dynamic System*

## TECHNICAL FEATURES

### Bars dimensions

800 x 100 x 100 mm (l x w x h)

31.5 x 4 x 4 inches (l x w x h)

### Capacity

2000 Kg / 4000 lb

(other available version 4000 Kg / 8000 lb)

### Protection grade

IP68 (water full immersion)

### Working temperature

-30°C/+70°C (-22°F / +158°F)

### Accuracy

STATIC +/- 0.5%

DYNAMIC +/- 3%

### Display

Graphic display with backlight and multi messages

### Unit of measurement

Pounds and kilograms

### Languages

Multiple language settings available

### Filter

BLOCKER filter for a stable weight reading

### Calibration

Factory-calibrated; arrives ready-to-use

### Maintenance

No maintenance costs

### Service

24/7/365 support

## Basic System

Measure weight without data management features.

- 2 weigh bars
- 1 Taurus basic indicator
- 1 power supplier and power cable
- 2 sensor cables



## Advanced System

Measure weight with complete data management features.

**The Advanced System monitors the weight of the herd with EID reference, generates statistics on each animal and offers suggestions on nutrition, herd health and and management based on herd size.**

- 2 weigh bars
  - 1 Taurus Advanced indicator
  - 1 power supplier and power cable
  - 2 sensor cables
  - 1 Taurus TRACE Software
- The TRACE Software can be integrated with the dinamica generale® feeding software DTM2009DDP™ for complete control of feeding processes and animal weight management.



## Dynamic System

Measures weight and includes complete data management features.

**The Dynamic System monitors the weight of the herd with EID reference, generates statistics on each animal and offers suggestions on nutrition, herd health and and management based on herd size.**

**The Dynamic System is designed to weigh the restless animals while they are walking and passing through gates, which means less stress for them and less time to weigh the entire herd.**

### *Certain daily weight acquisition.*

- 2 weigh bars
- 1 Taurus Dynamic indicator
- 1 power supplier and power cable
- 2 sensor cables
- 1 Taurus TRACE Software
- The TRACE Software can be integrated in the dinamica generale® feeding software DTM2009DDP™ for complete control of feeding processes and animal weight management.
- 1 Hot galvanized steel platform 2520 x 900 mm / 100 x 35.5 inches  
Coated black; animals tend to be afraid of steel or aluminum color

NOTE: Consistent readings from the Dynamic System is guaranteed only if all parts are made by dinamica generale®.



## **DYNAMIC** weighing

**Quicker and easier weighing with less stress to the animal during weighing operations**



**No stopping**

# TAURUS

## Taurus TRACE Software

### THE PRODUCT

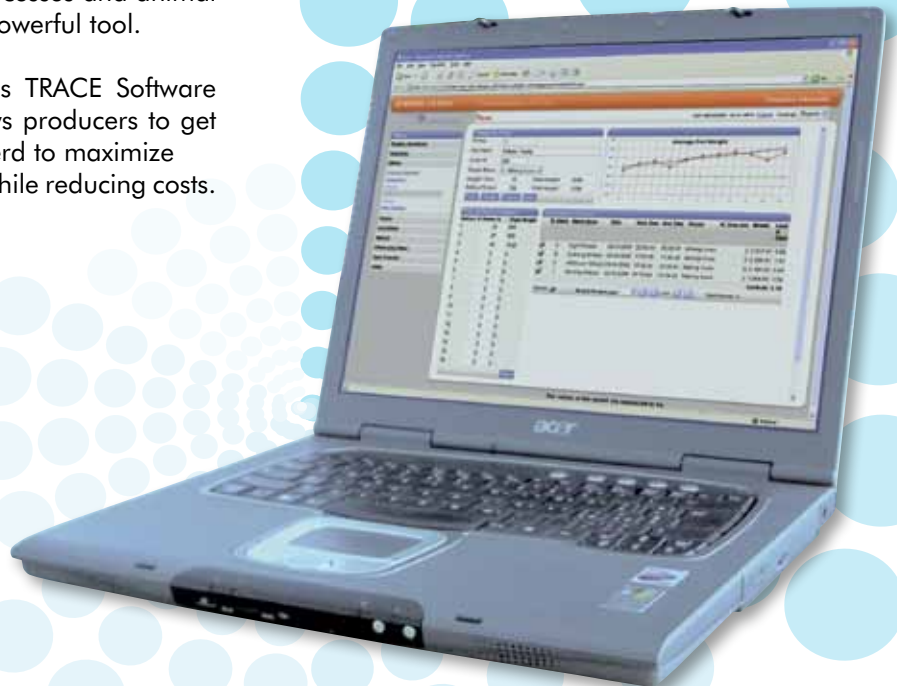
Taurus TRACE Software helps compile important information about your herd based on the readings from your Taurus system.

Data is gathered by means of radio frequency from the PC and the weight indicator covering distances over 1 km, therefore differentiating from other products that have less coverage.

All Taurus TRACE data is stored in easy-to-read tables. With just a few of clicks of a mouse, graphics and statistics can be retrieved for each animal or of the entire herd.

Taurus TRACE Software helps producers make difficult decisions on the management of their herd. The Software is also integrated in the *dinamica generale*® DTM2009DDP™ for a complete control of feeding processes and animal weight through a unique and powerful tool.

The combination of the Taurus TRACE Software with the DTM2009DDP™ allows producers to get the best information on their herd to maximize production and management while reducing costs.





4000 m<sup>2</sup> (13000 feet<sup>2</sup>) covered,  
divided on 2 buildings on a total  
area of 12500 m<sup>2</sup> (41000 feet<sup>2</sup>)

## CONTACTS

### GENERAL INFORMATION

info@dinamicagenerale.com

### SALES DEPARTMENT

sales@dinamicagenerale.com

### R&D DEPARTMENT

technical@dinamicagenerale.com

### CUSTOMER SERVICE

assistance@dinamicagenerale.com

support@dinamicagenerale.com

## TDI ASSISTANCE



Technical assistance 24 hours a day, 7 days a week,  
365 days a year.

## QUALITY & CERTIFICATIONS

dinamica generale® confirms the aptitude to work with the high standards required at international levels by offering its clients the best product and support.

We have successfully passed the recertification inspection for the quality management system and the environment: UNI EN ISO 9001:2008 e UNI EN ISO 14001:2004.

In addition to our other certifications, we achieved the prestigious UNI EN ISO 13485:2003 in 2009 that demonstrates all the company's attention to the clients in the medical sector.



ISO 9001:2008



ISO 14001



ISO 13485

*"We reserve the right to modify designs, or implement product improvements, without any obligations with respect to goods purchased."*

09162010

dinamica generale® US, Inc.  
345 Harvestore Drive, Suite 200  
DeKalb, IL 60115  
tel ++1 715 781-7134  
fax ++1 815 756-7821

[www.dinamicagenerale.com](http://www.dinamicagenerale.com)  
[dg-usa@dinamicagenerale.com](mailto:dg-usa@dinamicagenerale.com)

